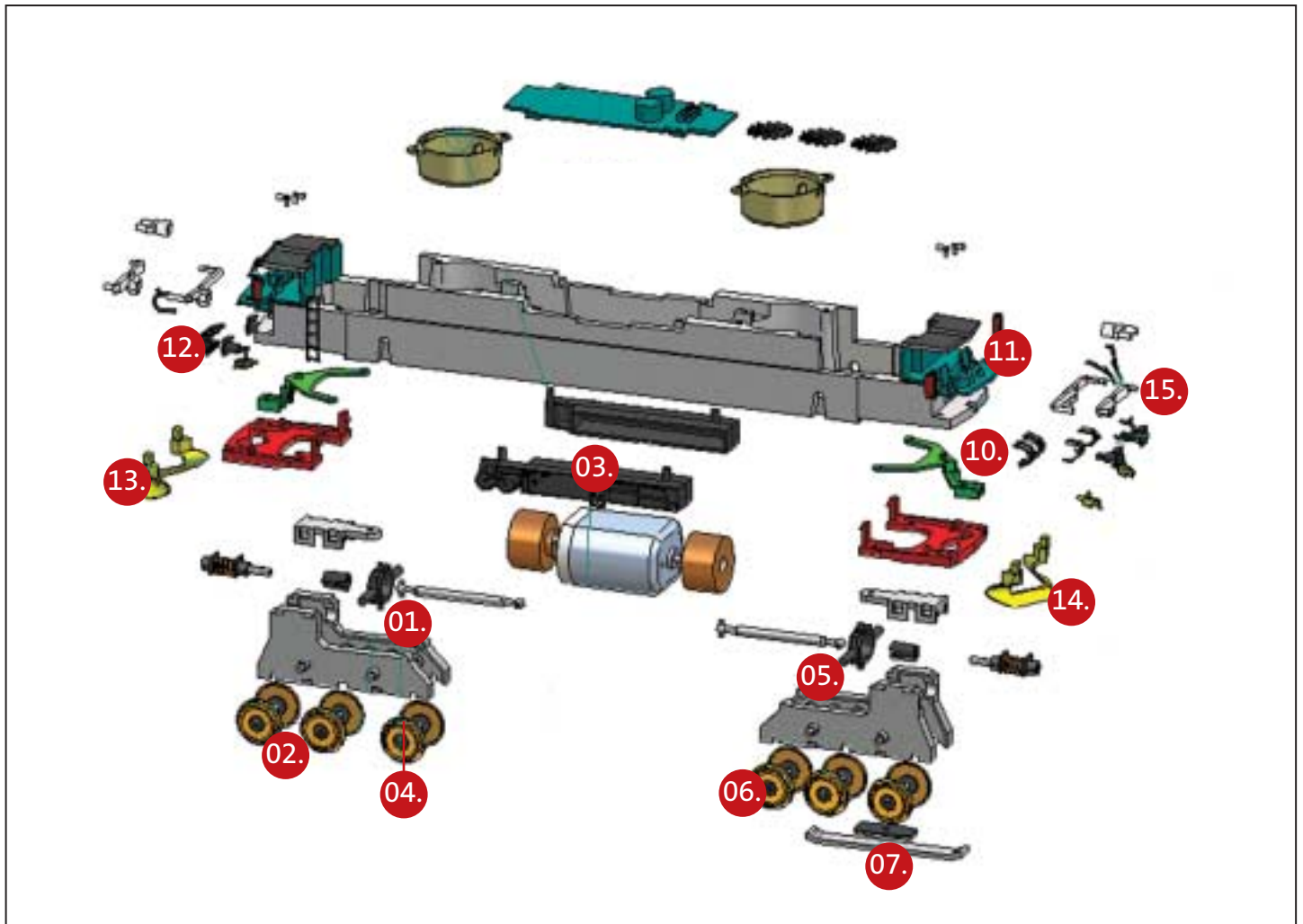


# Litra DI 4 - NSB



01.	91002	Gearbox with DC wheels	11.	92007	Komplet optical fiber
02.	91003	Wheelset DC	12.	92008	Buffer - 4 pieces
03.	91009	Earflap - black - 4 pieces	13.	92009	Snow plough open and painted
04.	91010	10 pieces traction tyres	14.	92010	Snow plough closed and painted
05.	92001	Gearbox with AC wheels	15.	92011	Airhoses, connectors etc.
06.	92002	Wheelset AC	16.	92012	LokSound decoder (not showned)
07.	92003	Pickup shoe (AC)			
08.	92004	Driving mirrors			
09.	92005	Wipers			
10.	92006	KKK			

# hobby trade

Hobbytrade · Tværvej 1 · DK-7000 Fredericia · Telefon 22 61 94 73  
Telefax 75 94 01 06 · [www.hobbytrade.dk](http://www.hobbytrade.dk) · [info@hobbytrade.dk](mailto:info@hobbytrade.dk)

# Litra DI 4 - NSB

Congratulations with your new Di 4 locomotive. In this brochure, we will give you some small details, so you will get the optimal experience with your new Di 4 locomotive.



1. Read the directions carefully, before taking your new Di 4 locomotive out of the box.
2. Grab around the Di 4 locomotive with both hands. Certain details are glued on by casting technique reasons and may break of, if handled the wrong way.

Before getting complete advantage of your new Di 4 locomotive, a running-in period on minimum 2 hours is to count on. Remember to lubricate the locomotive regular in the gearbox and other movable objects..

The Di 4 locomotive is prepared for digital driving, but naturally it can drive on all analogue systems too. If you have bought an AC version, an Uhlenbrock decoder is installed from the factory. Read separately instruction.

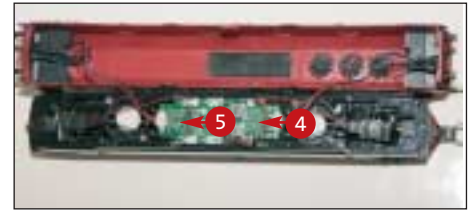
## Mounting of accessories

Enclosed are: air hoses, driving mirrors in open and closed conditions and wipers, all to be mounted after the model is out of the box.

1. The hoses are to be mount in the pre founded holes in the buffer plank. Secure them with a little dash of glue.



2. The wipers are to be mount in the shape founded holes over the windscreen. Press into position and secure them with a dash of glue.
3. The driving mirrors are to be mount in the pre founded holes on the side. Press into position and secure them with a dash of glue.
4. Blind plug to decoder plug (only direct current DC models) To be removed before mounting of decoder.
5. Place for decoder.



6. Dis -and on assemble by the upper part: The upper part is attached with two taps, which are placed in the middle of the upper part. Gently press the sides of the upper part from each other and lift the upper part free from the under part. When you are to on assemble make sure that the wires won't get caught, between body and substructure. 2 pieces of dowels to attachment of upper part and chassis.

On this locomotive two years of claim right is given in order to the laws of sale. Any complaints are to be given to the store where you have bought your new locomotive.

Every wearing and accessories parts can be bought as spares. Please contact your store, if you need any kind of spares to your new Di 4 locomotive.

Enjoy!

